

Lalou Begue is a Licensed Acupuncturist having graduated from New England School of Acupuncture, and has been practicing acupuncture and



Chinese Medicine since 1984. He has a private practice in Beverly Massachusetts. In 2011, he joined the staff at the UMass Memorial – HealthAlliance Hospital’s Simonds-Hurd Complementary Care Center in Fitchburg. In 2012, he began offering his services at the Simonds-Sinon Cancer Center, providing free treatments to patients after radiation, or while they receive chemotherapy, thanks to a generous grant by Angie’s Spa Cancer Foundation.

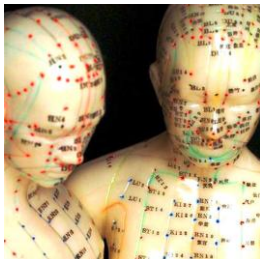
Lalou specializes in chronic pain and Oncology. He is a member of the Research Committee of the World Federation of Traditional Chinese Medicine Society.

Lalou Begue, Lic.Ac.

Available Wednesdays and Fridays

To schedule an appointment with Lalou, contact him directly by calling:
978-578-3872

Email: jbegue@healthalliance.com



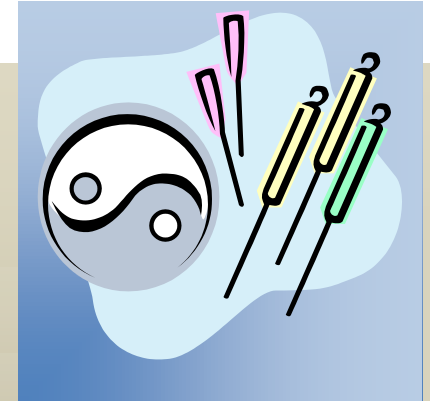
**Directions to
UMass Memorial - HealthAlliance Hospital –
Burbank Campus**

From the east & south: Take Route 2 West to Exit 32 (Route 13 North). Take Route 13 North toward Lunenburg until Route 13 ends at the Route 2A stoplight (approximately 4.5 miles). Turn left and head west on Route 2A. At the first set of traffic lights, turn right onto John Fitch Highway. Continue to the end and follow Roundabout to the left (Rt.31). After 0.4 miles turn slightly right onto Romes Way at HealthAlliance sign. Turn right onto Miller Street and proceed up the hill toward the Burbank Campus. Center entrance is located on same level as Urgent Care. Please use parking lot to left of Urgent Care’s lot. Entrance is located immediately next to flower bed near interior corner of building. Upon entering building at Entrance 2, the entrance to our center is immediately on your left.

From the west: Take Route 2 East to Exit 31B (Route 12 North). Take Route 12 North toward Fitchburg for 1.7 miles. Turn right at Bemis Road at traffic light. Proceed through four traffic lights and a blinking yellow light until stop sign at Route 31. Turn left at stop sign. Shortly after turning, look for the Burbank Campus on the hill on the right. Center entrance is located on same level as Urgent Care. Please use parking lot to left of Urgent Care’s lot. Entrance is located immediately next to flower bed near interior corner of building. Upon entering building at Entrance 2, the entrance to our center is immediately on your left.

**Simonds-Hurd
Complementary Care Center**

Acupuncture



UMass Memorial -HealthAlliance Hospital
Burbank Campus
275 Nichols Road – Entrance 2
Fitchburg, MA 01420

For more information
about this program,
call 978-343-5098

Behrooz Mahjori Sabet is a licensed acupuncturist who studied at the New England School for Acupuncture. He is also a Northeastern University graduate.



He joined the team of providers at UMass Memorial – HealthAlliance Hospital’s Simonds-Hurd Complementary Care Center in Fitchburg in 2015 and also offers his services at the Cancer Center treating patients undergoing radiation or chemotherapy as part of the Angie’s Spa grant.

Behrooz is a Doctor of Acupuncture certified by RI. Department of Health and Board of Registration in Medicine, certified member of National Board of Acupuncture and Oriental Medicine (NCCAOM), certified acupuncturist by Massachusetts Board of Registration in Medicine, and certified by Council of Colleges of Acupuncture and Oriental Medicine (CCAOM) in clean needle technique.

Behrooz has treated patients in a variety of clinical settings and specializes in the treatment of chronic pain, musculoskeletal conditions, infertility, and oncology.

Behrooz Mahjori Sabet, Lic.Ac.
Available Tuesdays & Thursdays

To schedule an appointment with Behrooz, contact him directly by calling:
617-642-2141

Email: bmahjorisabet@healthalliance.com

Acupuncture can be helpful in maintaining good health and in treating patients with a wide range of health problems. Acupuncture may be used alone or in combination with other complementary or conventional medicine treatments.

Acupuncture can be used to treat a number of conditions and health problems, including:

Side Effects of Cancer Treatment — Acupuncture can help ease the nausea associated with chemotherapy, increase the immune response, relieve pain and improve energy levels.

Headache — Acupuncture can help reduce the severity and frequency of chronic headaches, including tension headaches and migraines.

Chronic Neck and Back Pain — Acupuncture may be helpful in relieving chronic pain caused by spinal stenosis, disc herniation, sciatica and ankylosing spondylitis.

Women's Reproductive Health Issues — Acupuncture can be used to enhance fertility, relieve symptoms of premenstrual syndrome (PMS) and minimize bothersome symptoms of menopause, including mood changes, hot flashes and insomnia.

Chronic Fatigue Syndrome — Chronic fatigue syndrome (CFS) is a disorder that causes debilitating fatigue, including exhaustion and reduced stamina, neurological problems, and a variety of flu-like symptoms.

Chinese medicine considers symptoms of fatigue and exhaustion as originating from weakened organs. Acupuncture may help to revive and stimulate the affected organs from their depleted states.

Fibromyalgia — Fibromyalgia is a chronic pain disorder characterized by fatigue and widespread pain in the fibrous tissues of the muscles, ligaments and tendons. Acupuncture may help relieve the pain associated with this condition.

Asthma — Research in the past decade has shown that acupuncture can be very effective in alleviating the symptoms of respiratory diseases, including asthma. It may also reduce the frequency and intensity of asthma attacks.

Sports Injuries — Acupuncture can be used to treat various sports and repetitive stress injuries.

Gastrointestinal Disorders — Acupuncture may be helpful in relieving some of the discomfort caused by gastrointestinal disorders, including chronic liver disease, irritable bowel syndrome, gastroesophageal reflux disease (GERD) and inflammatory bowel disease.

All services and classes in our complementary care center are open to the public. You do not need to be a patient of HealthAlliance Hospital.

Rates/Insurance:

Initial visit:	\$70
(Includes full intake and treatment)	
Subsequent private sessions:	\$60
Community Acupuncture:	\$30/session or \$100/4 visit card

Physician referrals are appreciated and accepted, but not required, though we will ask for permission to communicate with your treating clinician.

All forms of payment accepted. Payment expected at time of visit.

Insurance: Though we are currently unable to accept insurance, we will provide receipts and documentation if you choose to seek reimbursement for services. Check with your insurance company to see if your policy covers or reimburses complementary therapies or classes. Flexible Spending Accounts offered through your employer can be used for some services, though may require a physician referral.